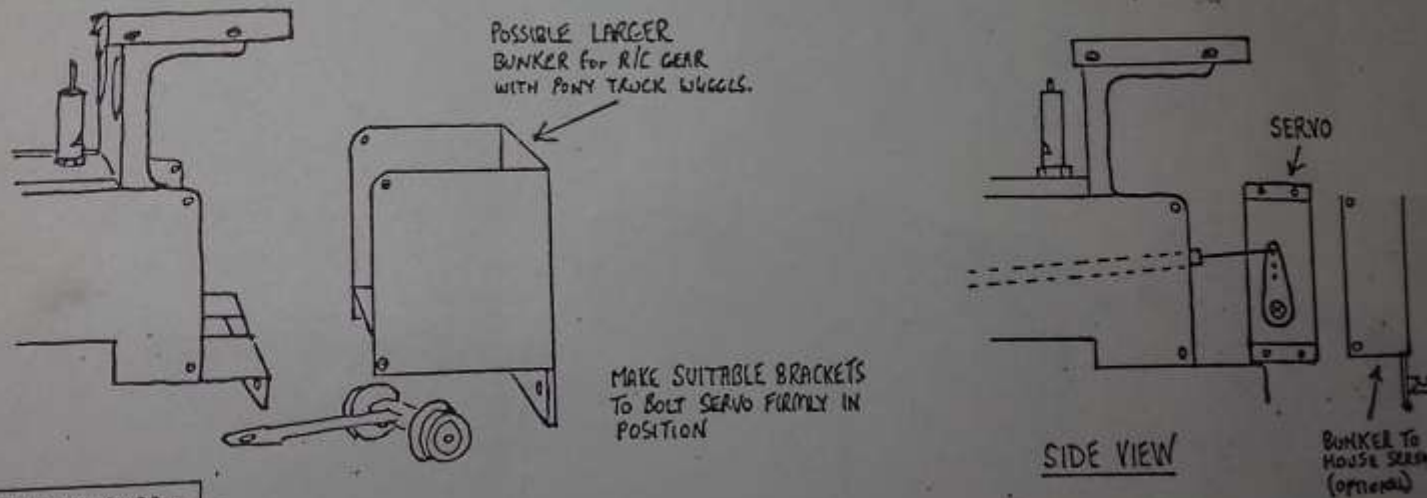
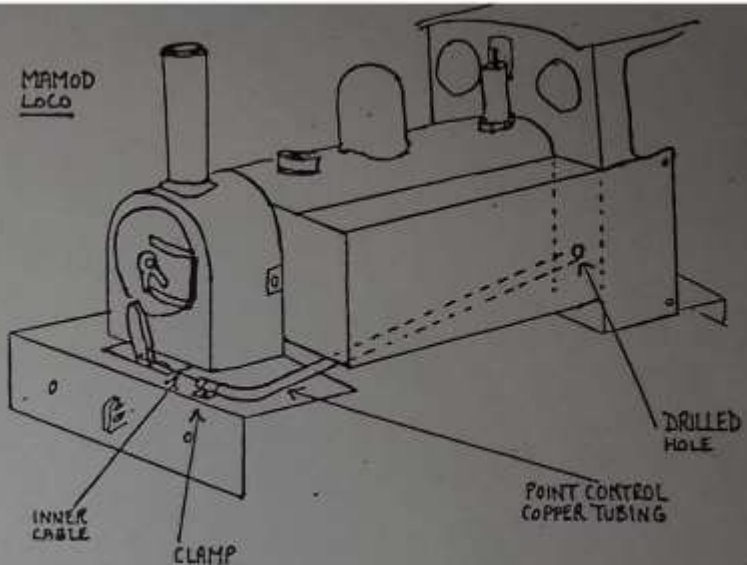


Suggestions for DIY fitting of Radio Control to Mamods.

Copper tubing and piano wire are readily available from most model shops, quite cheaply. The tube can be bent to shape and clamped and glued in position. Use Araldite epoxy adhesive as this is heat resistant. The servo can be positioned in the cab, if access is needed to the burner system then an extension can be made to the cab floor, possibly incorporating a rear coal bunker or a tender to carry the receiver and batteries. Suitable clamps can be formed from thin sheet metal, brass or tinfoil is ideal. Allow sufficient room around the servo for the full travel of the operating lever. It isn't necessary for the reverser lever on the loco to reach to the extreme edge of its slot as maximum steam opening is reached after a relatively short movement, trial and error will establish the correct travel for the individual loco. There are several different methods of arranging R/C for the Mamod, this is only one type. The positioning of the servo can be varied to suit your own requirements, depending on the room available in the loco's cab.



Design by Mr. R.G. Nicholls.