

Goodall Meths Burner for the Mamod Locomotive

M. M. GOODALL:

11 TANYGROES PLACE
TAIBACH
PORT TALBOT
WEST GLAMORGAN
SA13 2TU
TEL. 0639 893308

THE 'GOODALL' BURNER FOR THE 'MAMOD' LOCO. IS DESIGNED TO FIT WITHOUT ANY STRUCTURAL ALTERATION TO THE LOCO. ONCE FITTED THE BURNER DOES NOT REQUIRE REMOVAL FOR LIGHTING OR FILLING. CAN BE REFUELLED WITHOUT EXTINGUISHING FLAME

TANK CAPACITY HAS BEEN CALCULATED FOR FUEL TO BE EXHAUSTED BEFORE WATER IN BOILER.

EACH BURNER HAS BEEN TESTED, AND IS READY FOR INSTALLATION INTO LOCO. ADJUSTMENT OF WICKS MAY BE NECESSARY ACCORDING TO LOAD AND CONDITION OF THE LOCOMOTIVE.

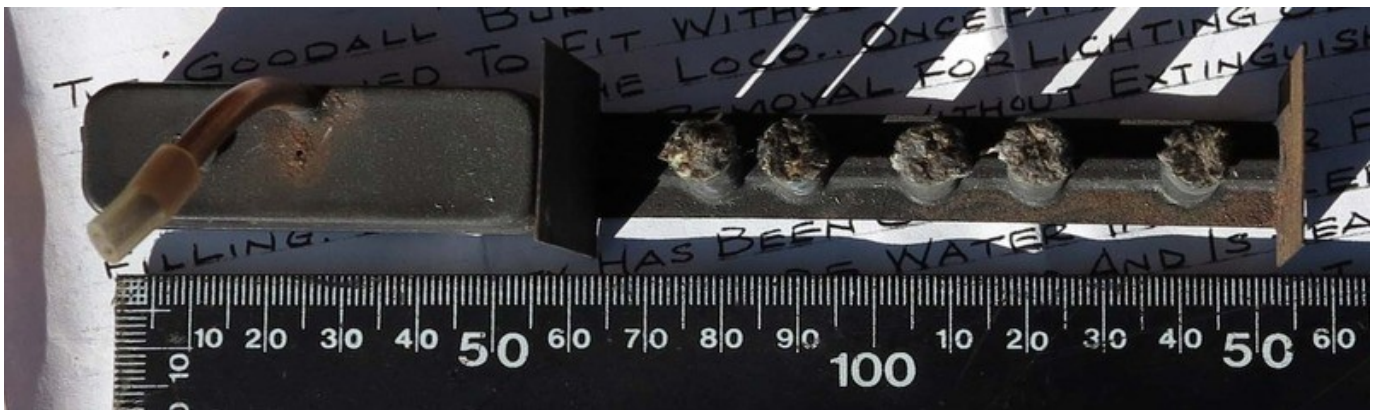
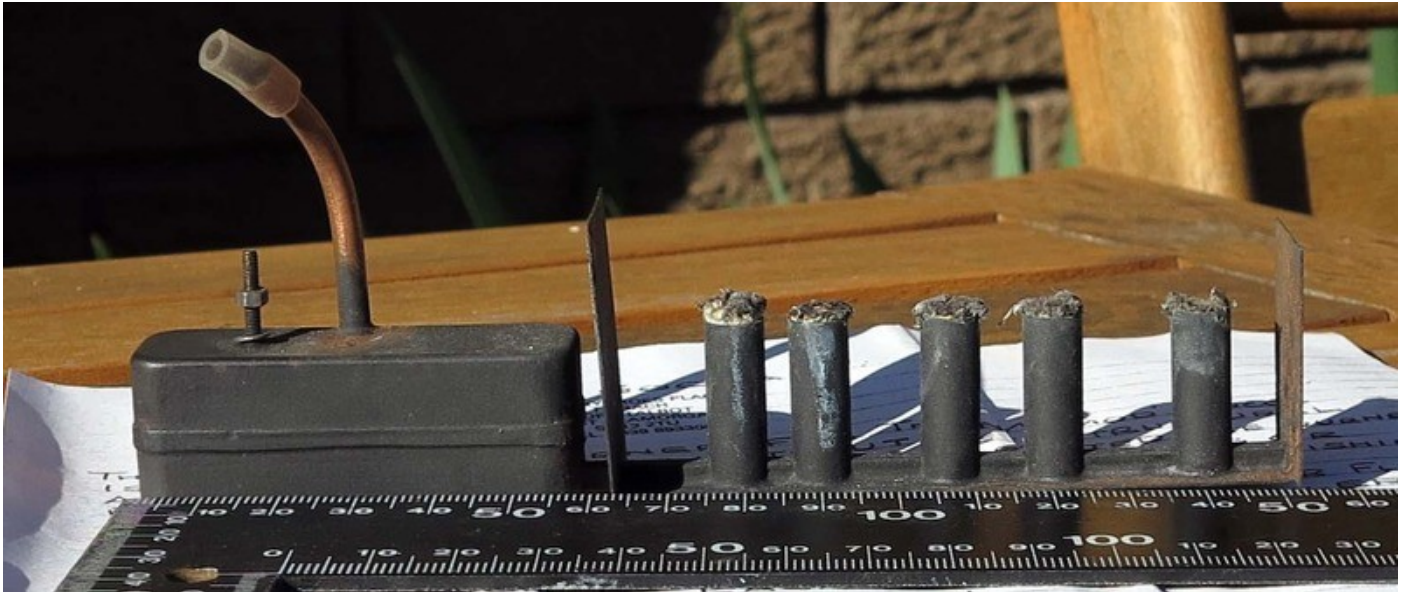
SPARE WICK, NUT AND WASHER AND SYRINGE CONNECTOR IS SUPPLIED WITH EACH BURNER.

INSTALLATION.

BURNER IS SECURED INTO LOCO BY STUD IN TOP OF TANK FITTING INTO REAR BUFFER BEAM. WASHER AND NUT GOES ON TOP OF BUFFER BEAM. IT WILL BE NECESSARY TO SHORTEN THE FOUR SECURING SCREWS AT THE REAR OF CHASSIS. CHECK BURNER IS LEVEL WHEN INSTALLED IN LOCO.

OPERATING BURNER.

- 1) USE ONLY A SYRINGE FOR FILLING BURNER.
 - 2) FILL SYRINGE WITH METHS AND CONNECT TO CONNECTOR ON BURNER
 - 3) DEPRESS PLUNCER SLOWLY UNTIL A SMALL AMOUNT OF SPIRIT APPEARS AT BREATHER HOLE IN TOP OF TANK.
 - 4) SUCK BACK WITH SYRINGE UNTIL AIR IS DRAWN. THIS WILL GIVE SMALL AIR SPACE ABOVE FUEL.
 - 5) TO EXTINGUISH FLAME BLOW DOWN SHARPLY ABOVE BOILER.
-



Photos Copyright of Bob Thornton, Australia, Oct 2012