

## Adapting MSS fuel tray for Esbit



From my own experience of running the MSS locos, I have found that the Esbit fuel supplied with Wilesco's steam engines burns far better than the MSS fuel. All that is needed is a very small modification to the fuel tray.

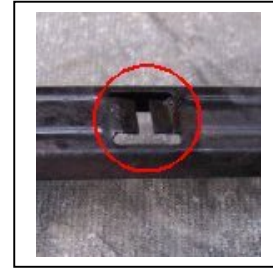
The early Mamod and the MSS fuel trays can be modified very easily to take two pieces of the Wilesco Esbit fuel.



**Left** - The fuel tray as supplied has two tabs bent upwards in the centre to hold two halves of the MSS fuel in place.

**Right** - If we place the Esbit fuel in the tray as it is the two pieces will sit on these tabs.





**Above** - All that is needed is to bend the two tabs so that they will lie flat.

**Below** - The two pieces of Esbit fuel fit perfectly into the tray.



The result is that the area of the fire has been increased a little and there is now no need to cut the fuel tablets to make them fit.

© Peter Longfils - 2007